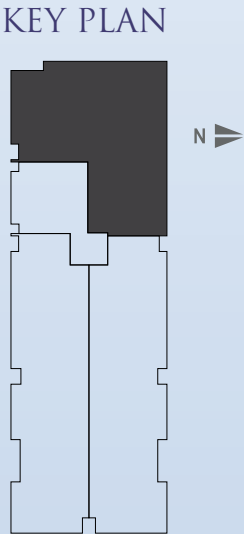




TYPE D FLOORPLAN

ROOM SIZES		AREAS	
Living	4.6 x 3.5	Living	74 m ²
Dining	3.0 x 2.6	Terrace	12 m ²
Bedroom 1	3.8 x 3.1	Carpark	14 m ²
Bedroom 2	3.1 x 3.6	Total	100 m ²





TYPE E FLOORPLAN

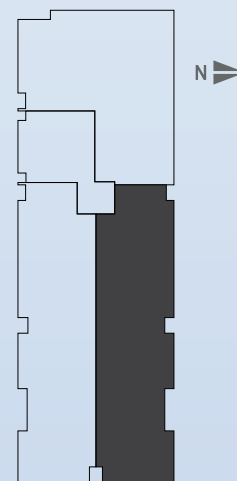
ROOM SIZES

Living	4.2 x 3.1
Dining	3.3 x 2.4
Bedroom 1	3.1 x 3.6
Bedroom 2	3.1 x 3.7

AREAS

Living	76 m ²
Terrace	16 m ²
Carpark	14 m ²
Total	106 m ²

KEY PLAN



TYPE F FLOORPLAN

ROOM SIZES

Living	4.2 x 3.1
Dining	3.3 x 2.4
Bedroom 1	3.1 x 3.6
Bedroom 2	3.1 x 3.7

AREAS

Living	76 m ²
Terrace	16 m ²
Carpark	14 m ²
Total	106 m ²

KEY PLAN

